

MAY - AUGUST 2024



LOVELAND MUSEUM

LOVELAND ARTS AND CULTURE



aha!

ART • HISTORY • AUDIENCES

2024



LOVELAND MUSEUM

LOVELAND ARTS AND CULTURE

P. 3 - Current Exhibits

P. 4-6 - Upcoming Exhibits

P. 7 - Classes & Events

Susan P. Ison, Director of Cultural Services
 Mikayla Adair, Marketing Supervisor
 Maureen Corey, Curator of Art
 Jennifer Cousino, Curator of History
 Jenni Dobson, Curator of Education
 Eric Franklin, Exhibit Designer
 Natalie Guerrero, Admin Support I
 Angela Canada Hopkins, Admin Support I
 Suzanne Janssen, Public Art Manager
 Jessica Johnson, Admin Support II
 Kristin Tuckerflores, Graphic Designer
 Kristi Woolsey, Administrative Supervisor
 Ashley Yager, Collections Manager

CULTURAL SERVICES BOARD

Juanita Cisneros
 Dr. Dierdre Cook
 Dr. Mary Jo Drew, Vice-Chair
 Margarita Holland
 Teri Johnson, Chair
 Jacki Marsh, Mayor, City Council Liaison
 Kris Ortmann
 Annie Reid, Alternate
 Cornelia Winters
 Michaela Zochniak, Alternate

VISUAL ARTS COMMISSION

Jade Windell
 Susan Atwater, Chair
 Madison Po
 Bruce Gswel
 Greg Hoff
 Jacki Marsh, Mayor, City Council Liaison
 Maryjo Morgan
 Abbie Powers
 Margaret Rosborough
 Amy Vialpando

Cultural Services is a Division within the City of Loveland

The City of Loveland is committed to providing an equal opportunity for services, programs and activities and does not discriminate on the basis of disability, race, age, color, national origin, religion, sexual orientation or gender. For more information on non-discrimination or for translation assistance, please contact the City's Title VI Coordinator at TitleSix@cityofloveland.org or (970) 962-2372. The City will make reasonable accommodations for citizens in accordance with the Americans with Disabilities Act (ADA). For more information on ADA or accommodations, please contact the City's ADA Coordinator at ADA.Coordinator@cityofloveland.org or 970-962-3319.

La Ciudad de Loveland está comprometida a proporcionar igualdad de oportunidades para los servicios, programas y actividades y no discriminar en base a discapacidad, raza, edad, color, origen nacional, religión, orientación sexual o género. Para más información sobre la no discriminación o para asistencia en traducción, favor contacte al Coordinador Título VI de la Ciudad al TitleSix@cityofloveland.org o al (970) 962-2372. La Ciudad realizará las acomodaciones razonables para los ciudadanos de acuerdo con la Ley de Discapacidades para americanos (ADA). Para más información sobre ADA o acomodaciones, favor contacte al Coordinador de ADA de la Ciudad en ADA.Coordinator@cityofloveland.org o al 970-962-3319.

GENERAL INFORMATION

HOURS & ADMISSION

Visit our website at:

www.TheLovelandMuseum.org/Visit for the most up-to-date information on hours of operation and current admission prices for the Museum.

The Loveland Museum is a City of Loveland facility; in the case of inclement weather, please check **LOVGOV.ORG** for information about temporary closures.

MEMBERSHIPS are available for purchase at the front desk and online.

PARKING with a two-hour limit is available along 5th Street and Lincoln Avenue. Three-hour parking is available in the lot on the southwest corner of 5th Street and Lincoln Avenue.

FOOD AND BEVERAGES are not permitted in the Museum.

PHOTOGRAPHY is permitted in designated areas only. No flash photography.

BACKPACKS AND LARGE BAGS are not permitted in the Museum. Lockers are not available and guests are encouraged to leave all valuables and large or heavy items at home.

SERVICE ANIMALS are welcome. Accessible restrooms and infant/toddler changing stations are available on the main floor.

SMILE! The City of Loveland Cultural Services Department reserves the right to use images and/or photographs of anyone in any activity, class, program, concert or event in any activity or public place in present and/or future publications or on the department's web pages for promotional purposes, unless told otherwise at the time image or photo is taken.

**COVER: Angélica Arenal Siqueiros,
 Photo by Luis C. Garza
 See more details on pages 4-5**



Current EXHIBITS

Connection to the Land On View Through May 12 Dunning Gallery

This exhibition features prints from the Loveland Museum's art collection, as well as original prints from Denver Artist Tony Ortega. Student artwork produced during Ortega's printmaking workshop is also displayed in the gallery.



Connection to the Land Exhibit



Amache Today: Photography Exhibit

Amache Today: Photography by Phillip Tigges On View Through June 9 12 Feet of Wall

Phillip Tigges' black and white photographs of present-day Amache honor his parents Ernest and Stella Tigges and the incarcerated Japanese Americans who lived at Amache between 1942 and 1945 during World War II.

Art Teachers to the Fore: Thompson Valley Art Teacher Exhibition On View Through June 23 Green Room

The artists in this exhibition work daily with students to boost critical thinking and observation skills, while also striving to define the creative language that fosters their growth as individual artists. Explore the inspiration and motivation driving the teaching artist from within their own creative output.



*Poppies on 6/12/23 at 8:30 am,
by Anne McManus*



Amy Joy Hosterman: Patterns of Power Exhibit

Amy Joy Hosterman: Patterns of Power Extended through June 30 Mezzanine Gallery

Fascinated by rocks, dirt, history, and process, Amy Joy Hosterman researches and collects wild clays and minerals across the country. Her work focuses on the study of clay and its role in the natural cycles of our terrestrial world, and comments on our absurd relationships with our environment.

Upcoming EXHIBITS

Governor's Art Show and Sale

May 11 - June 9

Main Gallery & Foote Gallery | Free Day Wednesday, May 22

Opening Gala Friday, May 10, 5-8 pm, for tickets visit GovernorsArtShow.org

Please join us as we celebrate 33 years of excellence. The Governor's Art Show and Sale is presented by the Loveland and Thompson Valley Rotary Clubs in conjunction with the Loveland Museum benefiting Rotary-sponsored charitable projects. The exhibition will feature a juried collection of outstanding works by 62 masterful Colorado artists in a wide variety of mediums, artistic techniques, and styles. This year's Legacy Artist is Clyde Aspevig. This exhibition beautifully combines excellence in art with the positive impact of guided philanthropy.



Hollyhocks, by Clyde Aspevig

One third of the net proceeds from the show will be donated to the Thompson Education Foundation (TEF). TEF supports students through the Resiliency Fund for Unhoused Youth by responding to emergency needs and assisting with basic needs.

As in previous years, art scholarships are awarded to local graduating high school seniors with funds generated from the show.

Awake!, Photo by Luis C. Garza



The Other Side of Memory: Photographs by Luis C. Garza

June 22 - September 1

Main Gallery East | Free Days July 24 & August 21
Public Reception Friday, July 12, 6-8 pm

Traveling exhibition organized by Cause Connect

There is at least one other side of memory—the road not traveled. This exhibition of 66 black-and-white silver gelatin prints is drawn from the extensive, largely unpublished archive of this Chicano photographer's work in Los Angeles, New York, and Hungary. Garza's images document his East Los Angeles community during the early 1970s, his South Bronx neighborhood during the 1960s, and his 1971 travels to Budapest, Hungary, for the World Peace Conference where he met Mexican muralist David Alfaro Siqueiros.

Upcoming EXHIBITS



Amor En Las Montañas Coloradas by Luis Santacruz

The Human Landscape

June 29 - September 1

Main Gallery West

Public Reception Friday,

July 12, 6-8 pm

Free Days July 24 & August 21

Elizabeth Alexander

Yazz Atmore

Luis Santacruz

This group exhibition addresses the subject of identity through the lenses of social justice, history, universal relationship, and kinship, both personal and in the broad context of community. The three artists in this exhibition use widely variant techniques of metaphor, representation, symbolism, and placemaking to communicate a vision that compresses objective documentation and first-person experiential behavior. By representing an accepted truth, these artists probe the subject of memory for its negative potential and as an instigator for growth.

For this exhibition and related publication, images are not arranged according to place or chronology, as is typical of documentary photography. Rather, curator Armando Durón seeks to subvert the usual distinction between documentation and art that form the two main branches of photography, allowing viewers instead to construct a personal narrative.

Images are paired to encourage the viewer to form a unique vision from the selected combination. The works in the exhibition were selected for their ability to evoke multivalent layers of memory.



Sueño, Photo by Luis C. Garza

Upcoming EXHIBITS

Stages of Life

June 14 - August 18

Dunning Gallery

Portraiture as an art form goes back as far as 5,000 years ago in ancient Egypt. Before the invention of photography, a portrait which was painted, sculpted, or drawn was the only way to record a person's appearance. Portraits depict the essence of a person or group. This exhibition features historic portraits from the Museum's collection exploring the different stages of human life.



Portrait from the Osborn-Timpke Estate



Fly made by Rick Takahashi

Rick Takahashi: Tying Flies

July 12 - October 13

Mezzanine Gallery

Rick Takahashi is well-known in the fly-fishing world as a top flytier. Combining his background in color and design theory with "on the water" testing, he creates flies that look and fish great. Included in the exhibit are Takahashi's handmade paper collages inspired by the Colorado landscape.

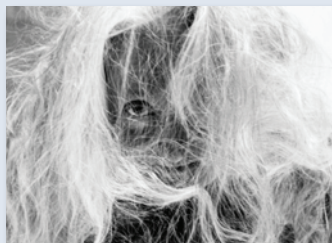
Here Hair: Photographs by Ronda Stone

July 12 - September 29

Green Room

Opening Reception Friday, July 12, 6-8 pm

Colorado-based photographer Ronda Stone has spent a career searching for the person beneath the public visage, exposing beauty at each human stage. In this exhibition she turns her lens on human hair, for its textural capacity, its symbolic nature, and its metaphor, to explore the extent of manipulation in perception and the ongoing visual conversation between honesty, reality, and the unceasing mutability between the two.



Death of the Flowers, by Ronda Stone



Survey Marker by Karl Dukstein

Contemporary Colorado Photography

July 12 - September 29

Foot Gallery

Opening Reception Friday, July 12, 6-8 pm

Contemporary photography is often defined as illustrating something intangible, a visual metaphor of something beyond the actual images that overreach the visual representation. Explore the diversity and innovation of contemporary photography in Colorado through this group exhibition guest curated by Karl Dukstein, Professor of Media and Visual Arts, Front Range Community College, Larimer.



Upcoming CLASSES & EVENTS

How to do Summer at the Loveland Museum:

1. Take a break from the heat and sign up for an art class or workshop! Learn a new skill. You don't have to know what you're doing; our instructors will help!
2. Cherry Celebration is July 20th! Come over for some cherry pie, cookies, and ice cream!
3. Wander our History Exhibits. We can provide you with a self-guided packet so that you can learn more about your town.
4. Got kids? Let us keep them busy for awhile with Art Camp, Lone Tree Summer School, or an Art Class.

There is something for everyone. Check out our website to see what kind of summer adventure we can offer you! TheLovelandMuseum.org



Cherry Celebration - July 20th from 5-8 pm

During the 1920s, Loveland boasted the largest cherry orchard to the west of the Mississippi River. Celebrate this heritage and commemorate Loveland's longstanding connection with the cherry industry by gathering for cherry treats, goods, live music, dancing, and fun!

4-4:45 pm – Art of the Tart Cherry Pie contest drop-off period

5-8 pm – Kids' activities, vendors, food trucks, cherry goods market, art

5-6:15 pm – Live music by Serpentine

6:40 pm – Winners for Art of Tart Cherry Pie contest announced

6:45-8 pm – Live music by Cipriano Ortega





Current **EXHIBITS**

Connection to
the Land
On View Through May 12

Amache Today:
Photography by
Phillip Tigges
On View Through June 9

Art Teachers
to the Fore:
Thompson Valley Art
Teacher Exhibition
On View Through June 23

Amy Joy Hosterman:
Patterns of Power
Extended Through June 30



Upcoming **EXHIBITS**

Governor's Art Show
and Sale
May 11 - June 9

The Other Side
of Memory:
Photographs by
Luis C. Garza
June 22 - September 1

Stages of Life
June 14 - August 18

Rick Takahashi:
Tying Flies
July 12 - October 13

Here Hair:
Photographs by
Ronda Stone
July 12 - September 29

Contemporary
Colorado
Photography
July 12 - September 29

FOLLOW US!



TheLovelandMuseum.org

503 N. Lincoln Avenue | Loveland, CO 80537 | 970.962.2410