

# aha!

Art • History • Audiences  
May - August 2026



*Kit the Swordsman*, from the project  
Manga Dreams. ©Anderson&Low  
Information on Manga Dreams on page 4

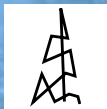


City of Loveland



LOVELAND  
MUSEUM

LOVELAND ARTS & CULTURE



LOVELAND ARTS  
& CULTURE

# AHA!

Art • History • Audiences

MAY - AUG 2026

P. 3 - 7 Exhibits

P. 7 Exhibits and Classes

P. 8 250/150 Events & Exhibits Schedule

Mikayla Adair, Marketing Supervisor

Chloe Bjork, Clerk/Cashier

Jennifer Cousino, Curator, History and Art

Jenni Dobson, Curator of Education

Eric Franklin, Exhibit Designer

Natalie Guerrero, Administrative Support I

Susan Ison, Director of Cultural Services

Suzanne Janssen, Public Art Manager

Allison Korleski, Administrative Support I

Kristin Tuckerflores, Graphic Designer

Kristi Woolsey, Executive Assistant

Ashley Yager, Collections Manager

## CULTURAL SERVICES BOARD

Juanita Cisneros, Vice Chair

Dr. Dierdre Cook

Dr. Mary Jo Drew

Margarita Holland

Teri Johnson

Kris Ortmann

Caitlin Wyrick, Council Liaison

Michaela Zochniak, Chair

## VISUAL ARTS COMMISSION

Greg Hoff, Chair

Susan Atwater, Vice Chair

Susan Brown

Bruce Gueswel

Ashley Kasprzak

Maryjo Morgan

Abbie Powers

Amy Vialpando

Jade Windell

Caitlin Wyrick, Council Liaison

The City of Loveland is committed to providing an equal opportunity for services, programs and activities and does not discriminate on the basis of disability, race, age, color, national origin, religion, sexual orientation or gender. For more information on non-discrimination or for translation assistance, please contact the City's Title VI Coordinator at [TitleSix@cityofloveland.org](mailto:TitleSix@cityofloveland.org) or (970) 962-2372. The City will make reasonable accommodations for citizens in accordance with the Americans with Disabilities Act (ADA). For more information on ADA or accommodations, please contact the City's ADA Coordinator at [ADA.Coordinator@cityofloveland.org](mailto:ADA.Coordinator@cityofloveland.org) or 970-962-3319.

La Ciudad de Loveland está comprometida a proporcionar igualdad de oportunidades para los servicios, programas y actividades y no discriminar en base a discapacidad, raza, edad, color, origen nacional, religión, orientación sexual o género. Para más información sobre la no discriminación o para asistencia en traducción, favor contacte al Coordinador Título VI de la Ciudad al [TitleSix@cityofloveland.org](mailto:TitleSix@cityofloveland.org) o al (970) 962-2372. La Ciudad realizará las acomodaciones razonables para los ciudadanos de acuerdo con la Ley de Discapacidades para americanos (ADA). Para más información sobre ADA o acomodaciones, favor contacte al Coordinador de ADA de la Ciudad en [ADA.Coordinator@cityofloveland.org](mailto:ADA.Coordinator@cityofloveland.org) o al 970-962-3319.

## MUSEUM HOURS

Sun & Mon - CLOSED

Tue & Wed - 11 am - 5 pm

Thu & Fri - 11 am - 7 pm

Sat - 10 am - 4 pm

2nd Fridays - 11 am - 8 pm

## ADMISSION FEES

Loveland Resident \$7

Non-Resident \$10

Children 12 & Under FREE

Must be accompanied & supervised by someone 16 or older

Museum Members FREE

Membership Benefits:

Free admission,

20% discount on classes,

10% discount on Museum Store,

and Member-only receptions

MEMBERSHIPS are available for purchase at the front desk and online.

PARKING with a two-hour limit is available along 5th Street and Lincoln Avenue. Three-hour parking is available in the lot on the southwest corner of 5th Street and Lincoln Avenue.

FOOD AND BEVERAGES are not permitted in the Museum.

PHOTOGRAPHY is permitted in designated areas only. No flash photography.

BACKPACKS AND LARGE BAGS are not permitted in the Museum. Lockers are not available and guests are encouraged to leave all valuables and large or heavy items at home.

SERVICE ANIMALS are welcome. Accessible restrooms and infant/toddler changing stations are available on the main floor.

SMILE! The City of Loveland Cultural Services Department reserves the right to use images and/or photographs of anyone in any activity, class, program, concert or event, or public place in present and/or future publications or on the department's web pages for promotional purposes, unless told otherwise at the time image or photo is taken.

Cultural Services is a Division within the City of Loveland



City of Loveland

The Loveland Museum is a City of Loveland facility; in the case of inclement weather, please check [LOVGOV.ORG](http://LOVGOV.ORG) for information about temporary closures.

Free Admission Days: May 13 & 30, July 11 & 23, August 1 & 19  
Every Second Friday 5 - 8 pm: Free Admission for Night on the Town

## Exhibits

# Governor's Art Show & Sale

April 25 through June 6, 2026  
Main Gallery and Foote Gallery

**Opening Gala** - Friday, April 24, 5 - 8 pm,  
for tickets visit [GovernorsArtShow.org](http://GovernorsArtShow.org)

**Artist Meet & Greet** - Every Saturday of the show from 2 - 4 pm

**Live Paint Event** - Saturday, May 30, 10 am - 4 pm



*In the Orchard*, by Quang Ho



*The Lone Bull*, by Jeremy Manyik

Join us in celebrating 35 years of excellence at the Governor's Art Show and Sale, presented by the Loveland and Thompson Valley Rotary Clubs in partnership with the Loveland Museum.

100% of the net proceeds from the event benefit Rotary-sponsored charitable projects. This juried exhibition will showcase the exceptional works of 65 talented Colorado artists, highlighting a diverse range of mediums, techniques, and styles.

The Governor's Art Show beautifully merges artistic excellence with the power of philanthropy. Over \$4 million has been distributed to artists, nonprofits and art scholarships. Over \$150,000 has been distributed to the Thompson Education Resiliency Fund for Unhoused Youth which addresses emergencies and basic needs for students in need.

GOVERNOR'S  
**ART**  
SHOW

Please visit  
[GovernorsArtShow.org](http://GovernorsArtShow.org)  
for more information.

Free Admission Days: May 13 & 30, July 11 & 23, August 1 & 19  
Every Second Friday 5 - 8 pm: Free Admission for Night on the Town

## Exhibits

# Manga Dreams

June 26 through September 12, 2026 • Main Gallery

**Private Member Reception** - Friday, June 26, 5 - 7 pm

**Kintsugi Workshop** - Saturday, July 25, 12 - 3 pm, visit [TheLovelandMuseum.org](http://TheLovelandMuseum.org) for more information and to register.

**Anime Film Festival at the Rialto Theater** - all showings are \$5  
*Spirited Away*, Friday, July 10, 7 pm. *Howl's Moving Castle*, Saturday, July 11, 2 pm. *Evangelion: 3.0+1.01 Thrice Upon A Time*, Saturday, July 11, 7 pm.  
For \$5 tickets visit [RialtoTheaterCenter.org](http://RialtoTheaterCenter.org) or 970-962-2120.



*Cherry Blossom*, from the project Manga Dreams. ©Anderson&Low

The resulting characters are entirely original, not based on existing manga.

The exhibition highlights themes of identity, self-expression, media representation, cosplay, gender, and digital art.

**Curatorial Exhibitions**  **LOVELAND**  
• COLORADO •

Manga Dreams explores identity, media, and self-perception through cyberculture and digital technology. The exhibition features studio portraits of Asian youth in original, manga-inspired costumes, posing as characters they created themselves. Combining photography with digital techniques, each image builds immersive, imaginative worlds.

Originating in Japan, manga—meaning “cartoon”—bridges popular culture and contemporary art. The artists invited non-professional participants from the street, providing styling while encouraging them to invent unique backstories.



*The Five Heroes*, from the project Manga Dreams. ©Anderson&Low

Free Admission Days: May 13 & 30, July 11 & 23, August 1 & 19  
Every Second Friday 5 - 8 pm: Free Admission for Night on the Town



## Exhibits

# Marquetry: Evolution of Art in Wood

July 10 through September 26, 2026 • Foote Gallery

**Public Opening Reception** - Friday, July 10, 5 - 7 pm

**Workshops** - Friday, July 17, and Tuesday, August 22,  
visit [TheLovelandMuseum.org](http://TheLovelandMuseum.org) for more information and to register.

**Demonstrations** - July 10, August 14, Sept 11, 5:30 - 7:30 pm



Fred 6, by Fred Schmidt

This exhibition explores the art of marquetry, the intricate inlay of thin wood veneers to create detailed patterns and imagery. Carefully selecting pieces of wood for their color and grain, artists transform surfaces into richly decorative works. The term comes from the French *marqueter*, meaning "to inlay."

With roots in ancient Egypt, marquetry flourished in Renaissance and Baroque Europe, where it adorned fine furniture and interiors, often incorporating materials like ivory and mother-of-pearl. By the 17th and 18th centuries, it evolved into a sophisticated art form capable of depicting scenes and portraits, especially in France and Italy.

Today, marquetry endures as both craft and fine art, blending material, technique, and imagination.



Mikel's Train, by Mikel Levine

Free Admission Days: May 13 & 30, July 11 & 23, August 1 & 19  
Every Second Friday 5 - 8 pm: Free Admission for Night on the Town

## Exhibits

# Gold Rush in Leadville

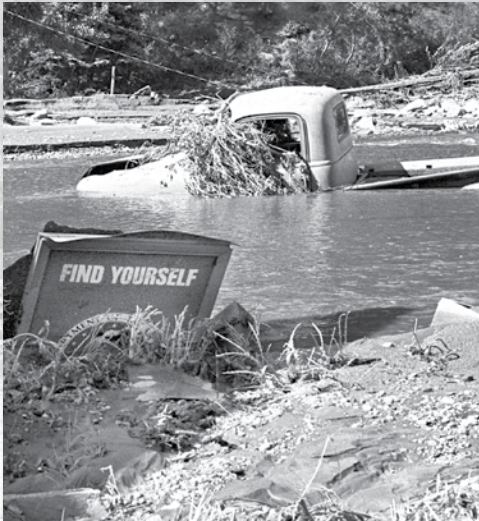
On view through July 18, 2026  
Dunning Gallery

This print collection explores the myth and reality of Leadville's gold-rush origins, from the 1859 California Gulch discoveries to its rapid rise as a booming industrial city. It captures both the ambition and hardship that shaped one of Colorado's most storied communities.



# Connected by the Canyon: 50 Years Since the Big Thompson Flood

July 31 - November 28, 2026 • Dunning Gallery  
**Public Opening Reception** - Friday, July 31, 5 - 7 pm



On July 31, 1976, a catastrophic flood claimed 144 lives in the Big Thompson Canyon between Loveland and Estes Park. Still considered one of the deadliest natural disasters in Colorado history, the tragedy affected thousands of residents and families across the region. This 50th anniversary retrospective explores the canyon's history through photography, maps, recovered objects, and oral histories. Beyond the destruction, the exhibit highlights how local organizations and neighbors united in the recovery efforts. Join us to honor those lost and reflect on the community resilience that followed this significant event.



Free Admission Days: May 13 & 30, July 11 & 23, August 1 & 19  
Every Second Friday 5 - 8 pm: Free Admission for Night on the Town

## Exhibits

# Nests: A Trypophobic Nightmare

On view through August 29, 2026 • Mezzanine Gallery

**Give Me Shelter, Writing Workshop**

Thursday, June 25, 5 - 7 pm, register at [TheLovelandMuseum.org](http://TheLovelandMuseum.org)

Nests is an immersive installation of clustered, nature-inspired forms that blur the line between comfort and unease. Evoking both shelter and hidden depths, the work invites viewers to confront vulnerability, transformation, and what lies beneath the surface through an interactive, evolving environment.

**Give Me Shelter – Poetry by Lynn Kincanon**

In response, Kincanon's poetry explores the meaning of safety and home—questioning whether our dwellings are sanctuaries or prisons, and how fear, environment, and human needs shape the spaces we inhabit.

## Eye on Loveland Michael Simms

On view through August 8, 2026  
12 Feet of Wall

Local photographer Michael Simms presents work from his Eye on Loveland project. Originally a digital landscape photographer, this exhibit reflects his shift to street photography and migration back to film.



## Classes & Workshops at The Beet Education Center



In addition to our regular art classes for Tots through Adults at the Beet Education Center, check out our Guest Artist Workshops!

Workshop & Class Listings and Registration:  
[TheLovelandMuseum.org/Classes-Camps-Workshops](http://TheLovelandMuseum.org/Classes-Camps-Workshops) 7



**LOVELAND  
MUSEUM**  
LOVELAND ARTS & CULTURE



## Museum Hours

Sun & Mon - CLOSED  
Tue & Wed - 11 am - 5 pm  
Thu & Fri - 11 am - 7 pm  
Sat - 10 am - 4 pm  
2nd Fridays - 11 am - 8 pm

## 250/150 Events

History Gallery Free Week!  
June 9 - June 13

Lone Tree School Open House  
50th Anniversary - July 4

## Admission Fees

Loveland Resident \$7  
Non-Resident \$10  
Children 12 & Under FREE  
Must be accompanied & supervised  
by someone 16 or older

Colorado Day!  
Celebrate Colorado's 150th  
Birthday with FREE ADMISSION  
to the Museum, August 1

## Exhibits

### Governor's Art Show & Sale

On view through June 6, 2026 • Main Gallery & Foote Gallery

### Gold Rush in Leadville

On view through July 18, 2026 • Dunning Gallery

### Eye on Loveland - Michael Simms

On view through August 8, 2026 • 12 Feet of Wall

### Nests: A Trypophobic Nightmare

On view through August 29, 2026 • Mezzanine Gallery

### Manga Dreams

June 27 through September 12, 2026 • Main Gallery

### Marquetry: Evolution of Art in Wood

July 10 through September 26, 2026 • Foote Gallery

### Connected by the Canyon:

### 50 Years Since the Big Thompson Flood

July 31 through November 28, 2026 • Dunning Gallery

**TheLovelandMuseum.org • 970-962-2410**

**503 N. Lincoln Avenue, Loveland, CO 80537**



Background Image: *Once Upon a Moonlit Trail* by Crystal DeSpain  
More information on Governor's Art Show & Sale on page 3